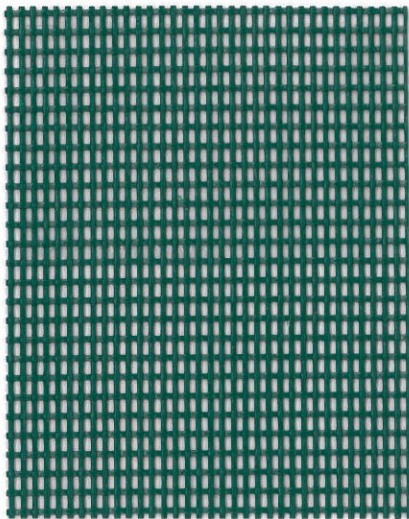


PHIFERTEX®

Casual Furniture and Awning Fabric

2015



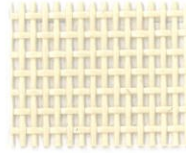
SPRUCE GREEN C09
997171

- 54 inches wide, 11.7 oz. per sq. yd.
- Vinyl encapsulated woven polyester mesh.
- This mesh fabric shades approximately 70%, but you can still see thru it and it allows the breeze through.

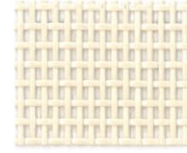
- Ideal for outdoor casual furniture, patio umbrellas, marine enclosures, breathable awnings and products where a strong, colorful mesh fabric is desired.
- California Technical Bulletin 117, SEC. E



WHITE 000
997142



ALMOND 186
997145



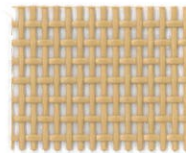
GREY SAND X00
997235



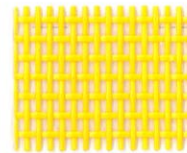
ASH GREY X11
997150



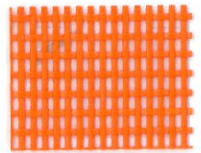
SPICE A40
997136



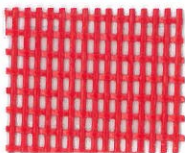
CAMEL 812
997149



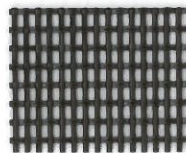
YELLOW 406
997143



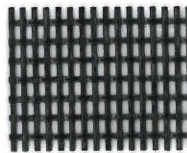
ORANGE 412
997146



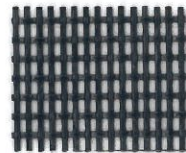
RED M96
997173



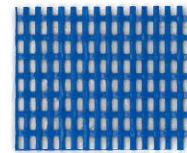
BROWN 800
997148



BLACK X04
997152



NAVY G01
997147



ROYAL BLUE G00
997141

PHIFERTEX® PLUS

- 54 inches wide, 16 oz. per sq. yd.
- Vinyl encapsulated woven polyester mesh.
- Very similar to Phifertex, only it is made with a tighter weave.
- This fabric is designed especially for sling and umbrella applications and shades approximately 92.5%.
- California Technical Bulletin 117, SEC. E



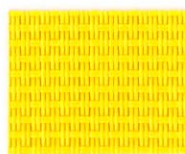
SALSA KG4
997295



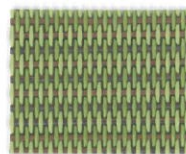
METALLICA SALSA KK3
997302



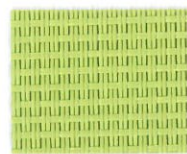
SNAPPY KF4
997288



YELLOW 406
997123



DUPIONE KIWI DJ7
997557



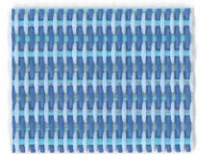
GARDEN GREEN DB6
997289



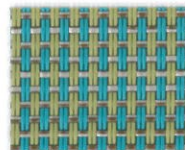
HOLLY GREEN CL1
997122



ROYAL BLUE G00
997125



DUPIONE POOLSIDE L37
997555



STRAW MAT BLUE LBY
997301



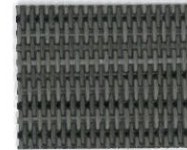
DUPIONE SAPPHIRE L96
997316



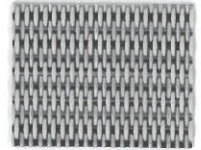
NAVY PIER GP5
997124



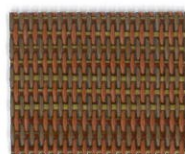
BLACK X04
997298



METALLICA SMOKE XXG
997314



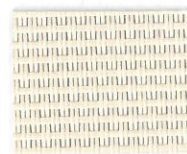
METALLICA PLATINUM XUP
997464



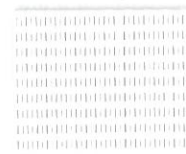
DUPIONE SPICE KT1
997315



STUCCO 0Y3
997129



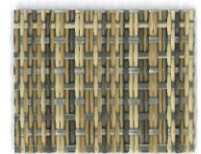
GREY SAND X00
997108



WHITE 000
997121



METALLICA WHITE OHK
997300



BURLAP BH4
997299

TRIVANTAGE

ORDER. DONE. GOOD CALL.



DISTRIBUTION CENTERS: UNITED STATES

Hayward, CA (800) 786-7607

City of Industry, CA (800) 841-0555

Denver, CO (800) 786-7609

Miami, FL (800) 786-7605

Lithia Springs, GA (800) 786-7606

Elmhurst, IL (800) 786-7608

Maryland Heights, MO (800) 786-7603

Somerset, NJ (800) 786-7602

Mebane, NC (919) 304-6810

Cleveland, OH (800) 786-7601

Irving, TX (800) 786-7610

Tukwila, WA (800) 213-1465

CANADA

Trican Corp. (800) 387-2851

www.tricancorp.ca

MEXICO

Tunali Tec, Morelos (777) 362-0636

Jalisco (333) 657-3660

www.tunalitec.com

CORPORATE OFFICE

1831 North Park Avenue
Glen Raven, NC 27217-1100
(800) 786-1876

www.trivantage.com

PHIFERTEX® IS A REGISTERED TRADEMARK OF PHIFER INCORPORATED.
TRIVANTAGE® IS A REGISTERED TRADEMARK OF GLEN RAVEN, INC. 120314-LEE-999542